

Heliport HOSPITAL

Licensed

Established 191016, Controlled 221001

Falun / Falu lasarett

ESEF

60° 36' 27" N 015° 38' 43" E

471 ft MSL

1 (2)

Ambulans and rescue flights only PPR 15 min (00-24).

SOS Rescue Coordination Centre

+46 (0) 23-102 51

Directly to heliport: **Rakelnr** 325-3302

Elevated

TLOF/FATO Ø 20 m Surface conc
Safety Area 10 m, Ø 40 m (not solid)

D= 20m RD = 16,4 m

Max Weight (MLW) = 11000 kg

Light: Yes, TLOF-green perimeterlight, Floodlight

Wind Stock: Yes, lighted

Heliport beacon

Information

In top of Parking deck.

Connexion whith hospital by elevator

Heliport service 070 5823585

Heliportmanager 070 2643900

County concil +46 (0) 23 490000

Firefighting services

Foam sprinklers, nozzle.

Accessible equipment in controlroom

Requested approach-takeoff surface/sector

Slope category A (class1)

Surface A	Approach	Take-off direction
	061 °	241 °

Surface B	Approach	Take-off direction
	274 °	094 °

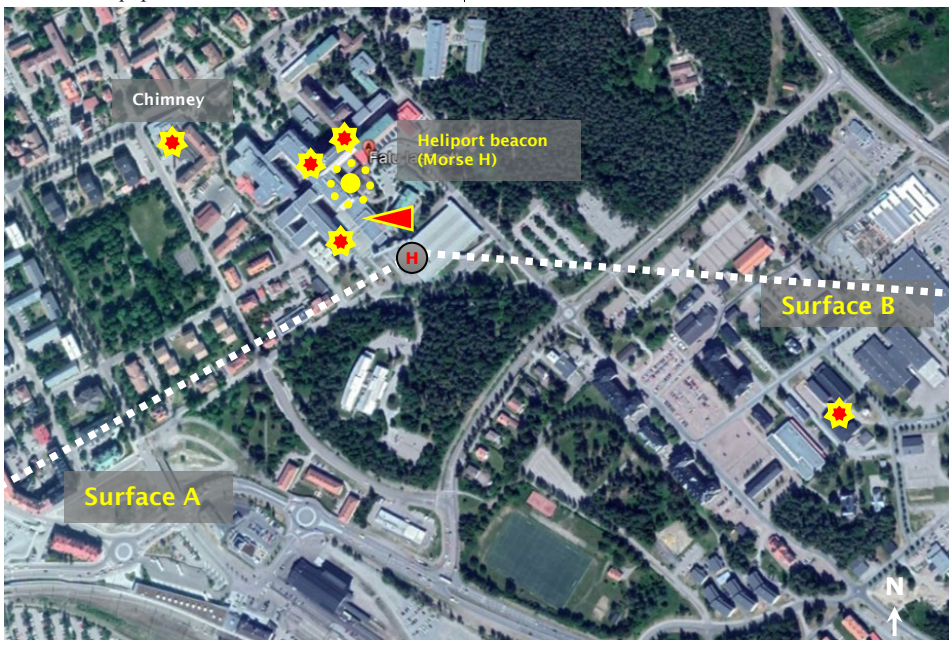
Obstacle



- Chimney
- Hospitalbuildings
- Church tower
- Tower
- Building
- Antenna

NOICE ABATEMENT PROCEDURES

Approach straight ahead in surface from 1500 ft
Climb straight ahead in surface to 1500 ft
until turn is initiated.



ESEF Falun / Falu lasarett

Established 191016, Controlled 221001

60° 36' 27" N 015° 38' 43" E

471 ft MSL

2 (2)

Requested approach-takeoff surface/sekter

Slope category A (class1)

Surface A **Approach** **Take-off direction**
 061° **241°**

Surface B **Approach** **Take-off direction**
 274° **094°**

